

CASE REPORT

Quardicuspid Aortic Valve as Risk Factor for Infective Endocarditis

Yahya Islamoglu¹, Cansu Tokat², Sumeyra Uysal³

¹Dicle University Faculty of Medicine, Department of Cardiology, Diyarbakir, Turkey

²Uludag University Faculty of Medicine, Bursa, Turkey

³Düzce University Faculty of Medicine, Düzce, Turkey

ABSTRACT

Quardicuspid aortic valve, an infective endocarditis's risk factor, has the property inborn aortic valve disease but disease development not up to enough understood. Infective endocarditis is together with 1, 4% of the cases. Aortic regurgitation may be seen together and transesophageal echocardiography is important for these patients because of diagnosis. Our case, a thirty nine years old woman, was asymptomatic quardicuspid aortic valve with aort valve regurgitation and we diagnosed via transesophageal echocardiography. We recommended antibiotic prophylaxis and annual follow to the patient. *J Microbiol Infect Dis* 2018; 8(1):30-32

Keywords: Infective endocarditis, quadricuspid aortic valve, aortic regurgitation

INTRODUCTION

Quardicuspid aortic valve (QAV), average incidence of 0, 0003% in autopsy examinations, is an infrequent congenital heart disease determined by the Balinton in 1862 [1]. Also QAVs are increasingly reported by advance imaging diagnostic techniques such as transthoracic echocardiography (TTE), transesophageal echocardiography (TEE) [2]. But the mechanisms of QAV development are not known precisely. According to the scientists, unnatural septation occurs in endocardial cushions because of formed inflammation [3]. Thus, in the truncus arteriosus whom is formed unnatural mesenchymal changes, is happened quardicuspid pattern formation, and/or in aorticopulmonary septum is happen unnatural fusion for its [4]. The aortic regurgitation (AR) is occurred with QAV and is the most common complication. In our case report, there is a patient that asymptomatic QAV with AR diagnosed via TEE.

CASE REPORT

Our hospital admitted a thirty nine years old woman patient for evaluation of diastolic heart murmurs. The patient had no previous history of cardiovascular disease and any symptom. Upon presentation, vitals were as follows: oral

temperature of 37,5°C, blood pressure of 140/70 mmHg, heart rate of 90 beats/min, and respiratory rate 18 breaths/min, with an oxygen saturation of 98% on room air. There was no any abnormality on physical examination apart from 4/6 diastolic murmur along the left sternal border. An electrocardiogram showed left ventricular high voltage in addition to mild upsloping ST segment depression in V5 and V6 leads. The chest radiogram showed normal findings.

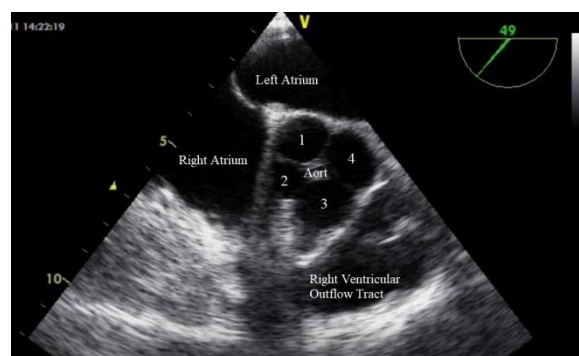


Figure 1. Transesophageal echocardiography showing an aortic valve with four cusps, when aortic valve is closed [left coronary cusp (4), right coronary cusp (3), non-coronary cusp (1) and accessory cusp (2)].

The patient declined to perform TTE. It demonstrated mildly left ventricle dilatation and normal ejection fraction, moderate AR related

Correspondence: Dr. Yahya Islamoglu, Dicle University Faculty of Medicine, Department of Cardiology, Diyarbakir, Turkey
E-mail: dryahya78@gmail.com

Received: 12 December 2017 Accepted: 06 February 2018

Copyright © JMID / Journal of Microbiology and Infectious Diseases 2018, All rights reserved

probable QAV. No other pathology was noted. A TEE, performed to better define her valvular anatomy, showed a QAV (Figure 1, 2) with preserved valve opening motion pattern and moderate AR (Figure 3). Antibiotic prophylaxis for infective endocarditis (IE) and annual follow for AR were recommended to the patient.

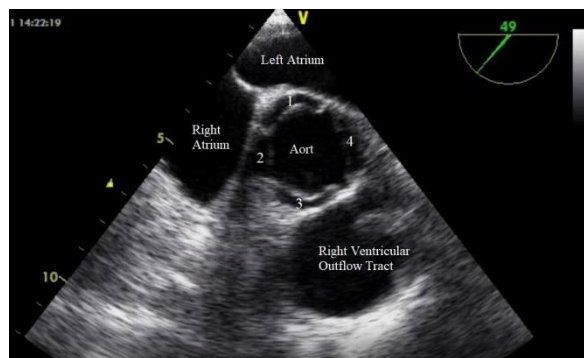


Figure 2. Transesophageal echocardiography showing an aortic valve with four cusps, when aortic valve is opened [left coronary cusp (4), right coronary cusp (3), non-coronary cusp (1) and accessory cusp (2)].

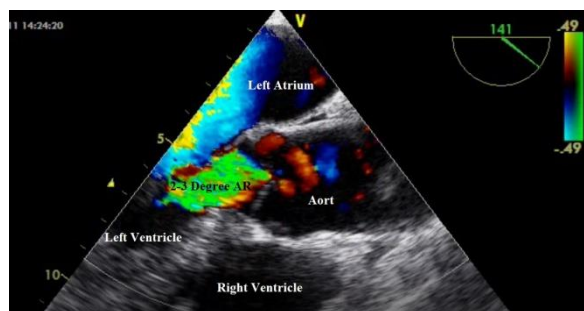


Figure 3. Transesophageal echocardiography showing 2-3 (moderate) degree aortic valve regurgitation (AR).

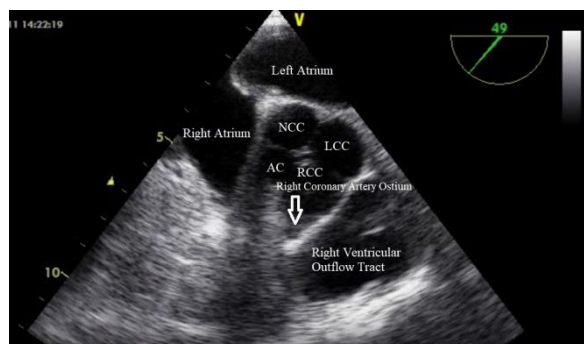


Figure 4. Transesophageal echocardiography showing the aortic valve with four cusps and the right coronary artery ostium is indicated by the arrow [left coronary cusp (LCC), right coronary cusp (RCC), non-coronary cusp (NCC) and accessory cusp (AC)].

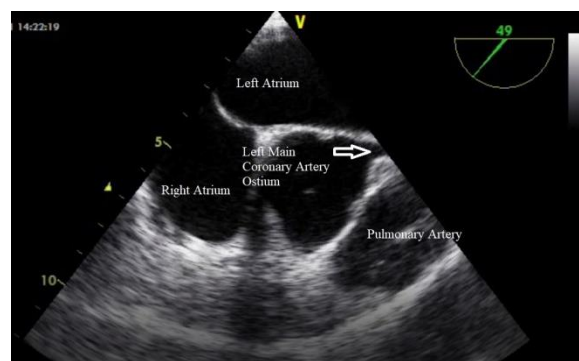


Figure 5. Transesophageal echocardiography showing the aortic valve with four cusps and the left coronary artery ostium is indicated by the arrow.

DISCUSSION

The QAV, rarely seen as inborn aortic valvular disease, isn't known exactly how it happens. Unnatural septation of embryological arterial trunk was the one of the most important theory. According to this theory, 4th leaflet formation occurs early phase of truncal septation.

In this early phase occurs unnatural aorticopulmonary septation or unusual cusp progression [5,6]. As a result of this, the ventriculoaortic junction becomes deformed geometric shape according to normally.

If a person has QAV, that person should also be carefully evaluated for other congenital abnormalities. QAV have been reported in association with nonobstructive cardiomyopathy, valvular stenosis (such as pulmonary, aortic or subaortic), ventricular septal defect and coronary artery anomalies (it was not there in our case, Figure 4, 5) [7, 8]. Nowadays TEE play an important role in notice QAV. In patients with QAV, continual follow-up is advised, in view of the eventual requirement of aortic valve surgery. Also IE is a potential complication [9]. In our case, no cardiovascular and other system abnormalities associated with QAV were there.

Hurwitz et al. [7] and Nakamura et al. [10] performed different two classification and we are classifying the patient with QAV according to anatomies since that time. Our patient had "Type B QAV" according to classification of Hurwitz et al. (3 equal large cusps and one smaller cusp), and "Type II QAV" according to classification of Nakamura et al.

Extra small cusps or similar other structures can be a risk factor for IE [11]. The unequal cusps the risk of IE is higher owing to absence of

symmetry, and stream disturbance. In the dissymmetry aort leaflets, because of unequal dispersion of stress and uncompleted juxtaposition during diastole occurs gradual AR and progressive disruption in course of time, and thus increasing the risk for IE [2]. Therefore, earlier identification of QAV with AR has vital in terms of the high risk of IE [12]. But in the patients, discrepancy still remains regarding prophylaxis of IE. While part of the authors advised for absolutely antibiotic prophylaxis [13], others proposed in patients with AR and these patients had an extra small cusp, all of them were not equal size [11]. In our case had moderate AR but asymptomatic and we recommended annual following with antibiotic prophylaxis of endocarditis to the patient.

In conclusion, QAV is an infrequently congenital heart disease noted in adult life, incidentally with TTE. TEE's significance is increasing day by day even more for clinicians. Also infection should keep in mind for such cases.

ACKNOWLEDGMENTS

Conflict of interest: The authors declare no personal or financial conflict of interest.

Financial Disclosure: No financial support was received

REFERENCES

1. Cheema MA. Quardicuspid aortic valve as cause of congestive cardiac failure: case history. *Pak Heart J* 1990; 23(1): 14-15.
2. Malviya A, Jha PK, Ashwin, Mishra J, Srivastava P, Mishra A. Quardicuspid aortic valve: a case report and literature review. *Egypt Heart J.* 2016; 68(4):271-275.
3. Savino K, Quintavalle E, Ambrosio G. Quardicuspid aortic valve: a case report and review of the literature. *J Cardiovasc Echography* 2015; 25: 72-76.
4. Attaran RR, Habibzadeh MR, Baweja G, Slepian MJ. Quardicuspid aortic valve with ascending aortic aneurysm: report a case and discussion of embryological mechanisms. *Cardiovasc Pathol* 2009; 18(1): 49-52.
5. Brouwer MHJ, de Graaf JJ, Ebels T. Congenital quardicuspid aortic valve. *Int J Cardiol* 1993; 38: 196-8.
6. Davia JE, Fenoglio JJ, De Castro CM, McAllister HA, Cheitlin MD. Quardicuspid semilunar valves. *Chest* 1977; 72: 608-610.
7. Hurwitz LE, Roberts WC. Quardicuspid semilunar valves. *Am J Cardiol* 1973; 31(5): 623-626.
8. Timperley J, Milner R, Marshall AJ, Gilbert TJ. Quardicuspid aortic valve. *Clin Cardiol* 2002; 25 (12): 548-552.
9. Bauer F, Litzler PY, Tabley A, Cribier A, Bessou JP. Endocarditis complicating a congenital quardicuspid aortic valve. *Eur J Echocardiogr* 2008; 9(3): 386-387.
10. Nakamura Y, Taniguchi I, Saiki M, Morimoto K, Yamaga T. Quardicuspid aortic valve associated with aortic stenosis and regurgitation. *Jpn J Thorac Cardiovasc Surg* 2001; 49: 714-716.
11. Takeda N, Ohtaki E, Kasegawa H, Tobaru T, Sumiyoshi T. Infective endocarditis associated with quardicuspid aortic valve. *Jpn Heart J* 2003; 44(3): 441-445.
12. Bilge AK, Bugra Z, Tayyareci Y, Ruzgar O, Umman S, Meric M. An uncommon coincidence of congenital quardicuspid aortic valve accompanied by hypertrophic obstructive cardiomyopathy. *Anadolu Kardiyol Derg* 2007; 7(4):E7-E8.
13. Kawanishi Y, Tanaka H, Nakagiri K, Yamashita T, Okada K, Okita Y. Congenital quardicuspid aortic valve associated with severe regurgitation. *Asian Cardiovasc Thorac Ann* 2008; 16(5):e40-e41.